

Early Childhood Home Visiting Programs and Health

Dr. Janis Gonzales, ECECD Chief Health Officer



NEW MEXICO

Early Childhood

Education & Care Department

Support in the Prenatal Period Can Set the Trajectory for Positive Health and Development Throughout the Life Course



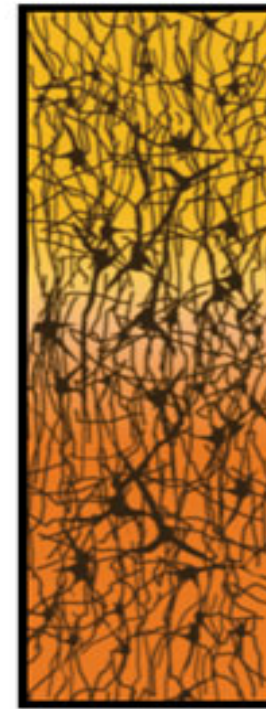
Newborn



1 Month



9 Months



2 Years



Adult

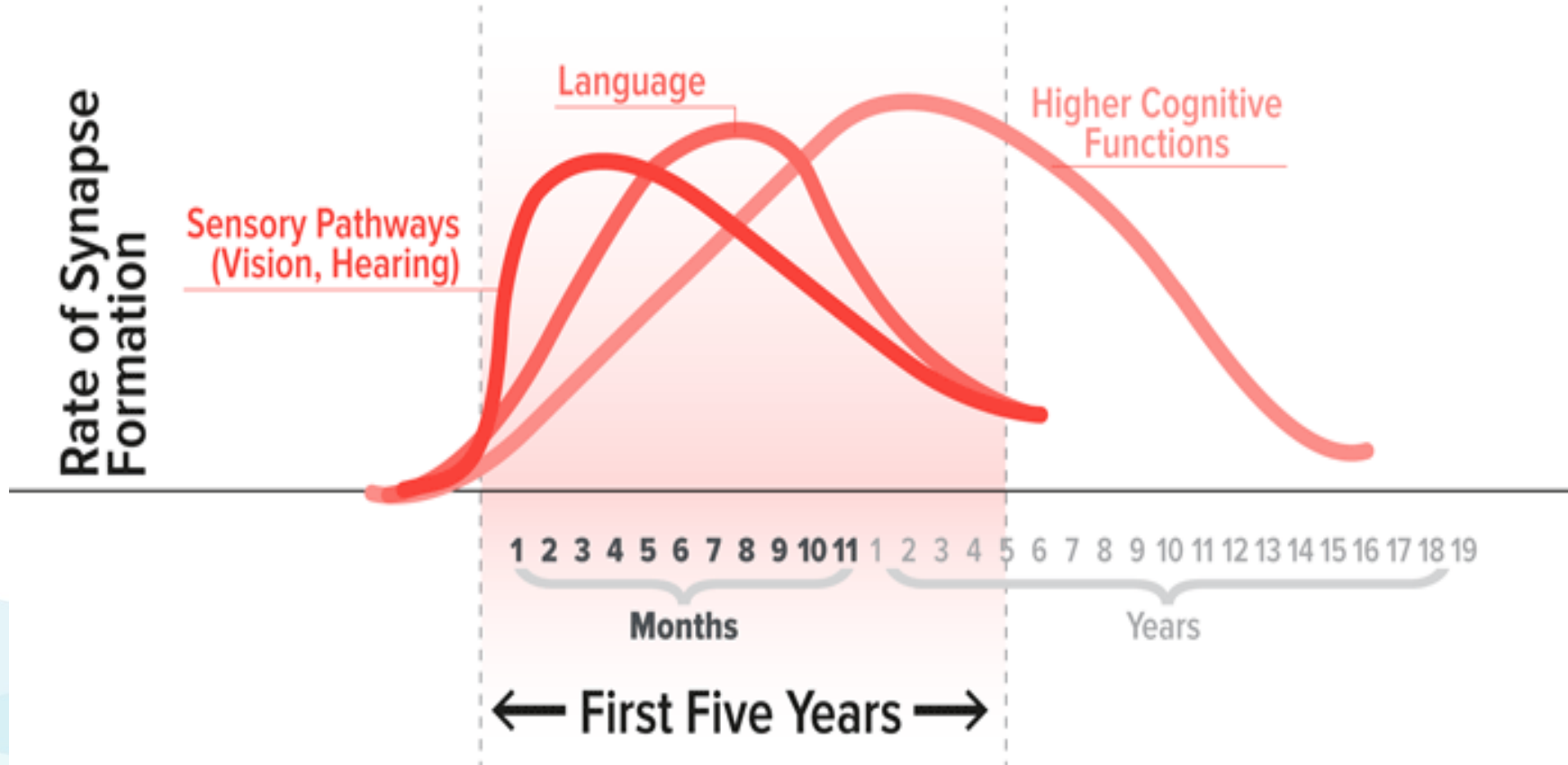


NEW MEXICO

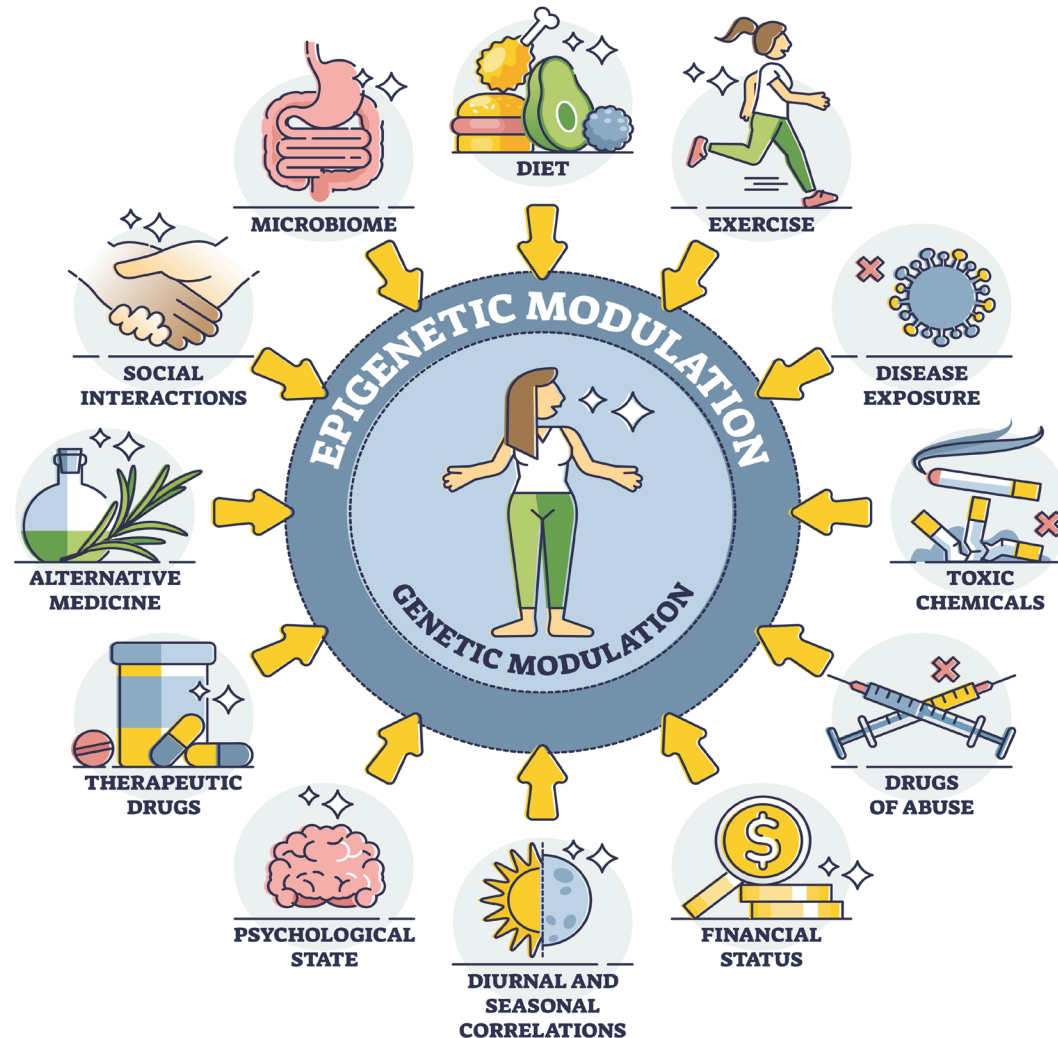
Early Childhood

Education & Care Department

Neuron Growth and Connections Over Time



Early Experiences can Chemically Modify Gene Expression



Genes and environment work together. The field of epigenetics has changed our understanding of how the environment interacts with our genes and how genes interact with the environment.

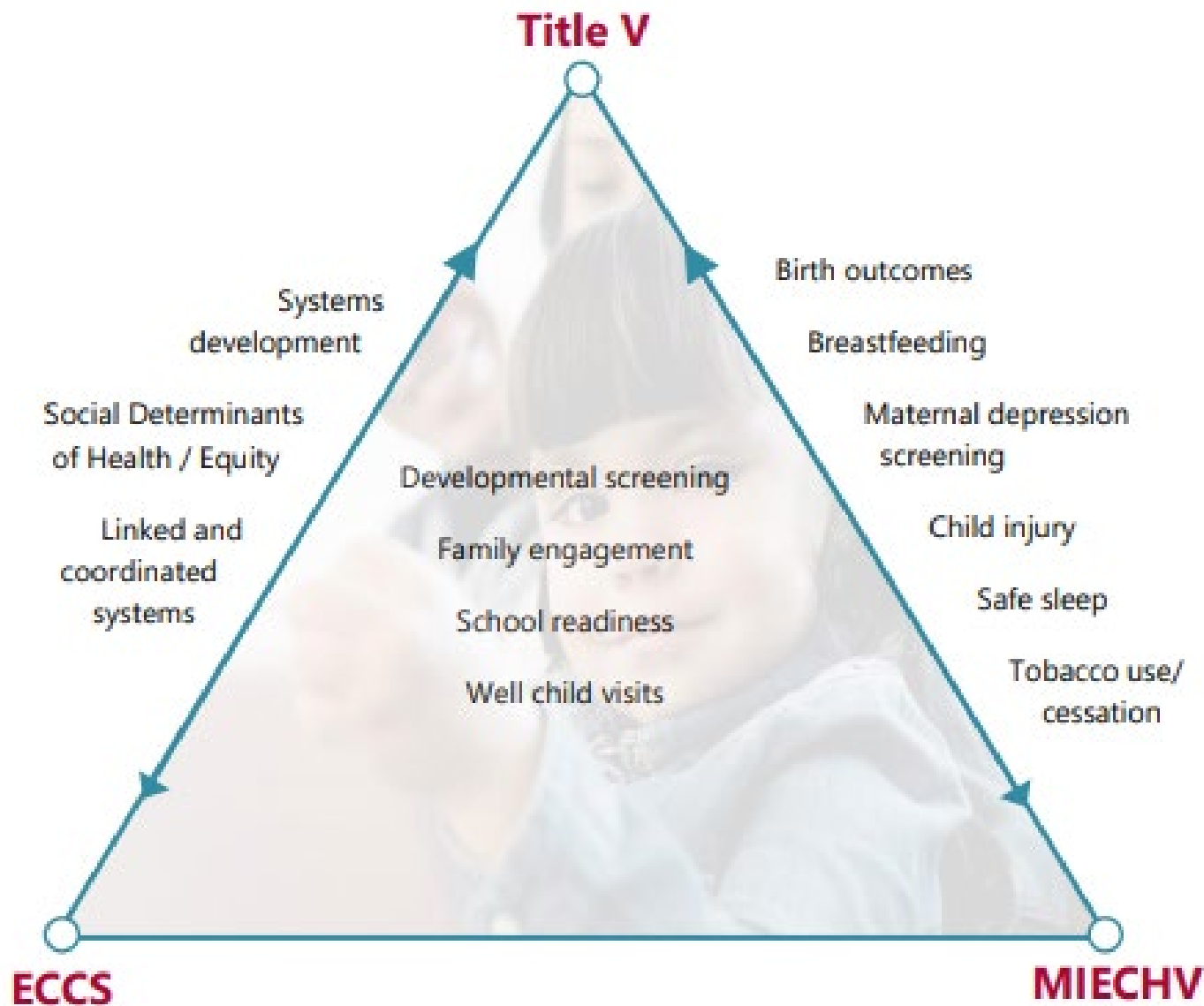


NEW MEXICO

Early Childhood

Education & Care Department

HRSA's Three Maternal Child Health (MCH) Programs – MIECHV, Early Childhood Comprehensive Systems (ECCS) and Title V - Work Together to Optimize Health Outcomes



Six Home Visiting Long-term Outcome Measures



- 1) Babies are born healthy
- 2) Children are nurtured by their parents and caregivers
- 3) Children are physically and mentally healthy
- 4) Children are ready for school
- 5) Children and families are safe
- 6) Families are connected to formal and informal supports in their communities.



NEW MEXICO

Early Childhood

Education & Care Department

Investing for tomorrow, **delivering today**

Healthy Births

Prenatal Care

Substance Use Treatment

Birth Planning

Vaccinations



Parental Nurturing

- Parent and Infant Mental Health
- Parent-Child Attachment
- Prevention of Adverse Childhood Experiences (ACEs)



NEW MEXICO

Early Childhood

Education & Care Department

Investing for tomorrow, **delivering today**



Child Physical and Mental Health

- Assist with connection to a medical provider/medical home
- Discussion of healthy development and milestones
- Ages and Stages (ASQ) screening and referral to Early Intervention
- Medical/Genetic/Birth conditions
- Newborn screening issues or questions
- Questions about pediatric visits and immunization schedule



NEW MEXICO

Early Childhood

Education & Care Department

Investing for tomorrow, **delivering today**

School Readiness



Safety of Parents and Children



Health and Safety



Safe Sleep Practices



Home Environment



Shaken Baby



NEW MEXICO

Early Childhood

Education & Care Department

Investing for tomorrow, **delivering today**

Connection to Community Support

Community-based services provide families and children with needed resources and information.

Social support is a protective factor that can prevent and reduce anxiety, depression, and feelings of isolation common to new parents



NEW MEXICO

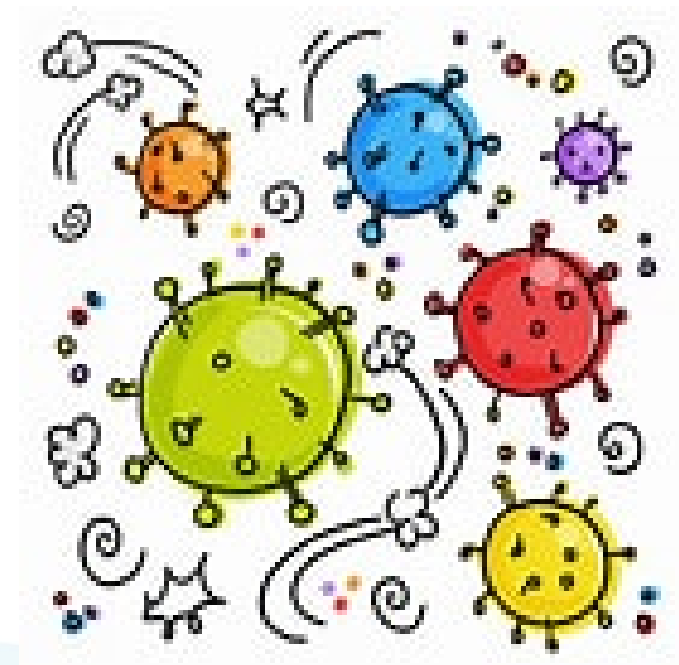
Early Childhood

Education & Care Department

Investing for tomorrow, **delivering today**

Effects of COVID-19 Pandemic

- *Parental Stress*
- *Mental Health Effects*
- *Economic Issues/Job loss*
- *More Difficult to find Child Care*
- *Delays in Medical Care and Immunizations*



NEW MEXICO

Early Childhood

Education & Care Department

For more information, please contact

Janis Gonzales MD, MPH

Email: Janis.Gonzales2@state.nm.us



NEW MEXICO

Early Childhood

Education & Care Department