



IFSP Online Modules: Quick Reference Guide for Supervisors



A University Center for Excellence
in Developmental Disabilities
Education, Research and Service



NEW MEXICO
Family Infant
Toddler Program



Overview of the IFSP Online Modules

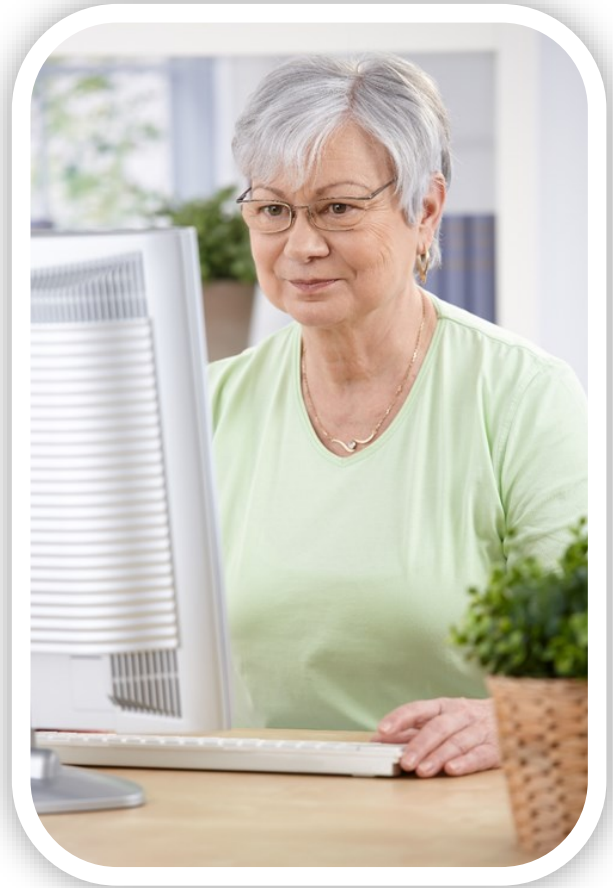
The IFSP Online Modules are three (3) web-based learning modules that are designed to support early interventionists gain an understanding of the process that is required to develop high-quality IFSPs in the NM FIT Program. These modules are a source of beneficial information to support ALL IFSP team members in contributing to the development of a functional IFSP. **These modules are REQUIRED for Developmental Specialists with an Exemption in the NM FIT Program.**

As with all of our online trainings, each participant will access the modules through Moodle. If the participant has already created an account in Moodle, she/he simply needs to log and choose the course that is desired. If the participant does not have a Moodle account, she/he will need to create one before being able to see the course listings. More specific information on how to access and all online trainings can be found on the ECN website:

<http://www.cdd.unm.edu/ecn/ECN/index.html>

Each module is broken into 2-3 smaller lessons to allow more flexibility for the learner to complete at her/his own pace and to allow greater ease of access over the internet. The modules are approximately 2 hours each and offers **CEUs for OTs, PTs, SLPs, and SW/Counseling** as well as certificates for Developmental Specialists.

In addition, each module contains handouts/resources for use during the training or as a support following the module. Each module provides 2 follow up activities for participants to consider doing to enhance their learning and to support their practice. Also, once a participant has completed the modules, she/he will be able to download the entire sample IFSP that is being developed within the modules.



Using this “Quick Reference Guide”

This guide is designed to support supervisors in mentoring new staff by providing you, the supervisor, with an overview of the information presented in the modules. Included in the guide is:

- ◆ Abbreviated Power Points of the modules. These are included as a reference for the content that is presented in each module. The basic information is in the PowerPoint, but not all content from the participant modules is included.
- ◆ Relevant handouts/resources to accompany the training. These handouts are tabbed in **BLUE** and titled “Participant Handout– Module _____”
- ◆ Guidance for supervisors in terms of practical application suggestions for staff, follow up reflections, and agency process considerations. These are tabbed in **YELLOW** are titled “Supervisor’s Considerations” and immediately follow the accompanying handout.

This guide is not meant as a substitute to taking the actual IFSP training. All supervisors are encouraged to participate in the online modules directly to have a firsthand experience of the materials and the way in which the concepts are discussed. Use this guide as a resource to support your thinking about how to provide individualized mentoring experiences for your staff and to answer any relevant questions.

If you need additional assistance and/or information regarding how to use this guide and/or designing a mentoring system within your agency, please contact your ECN Program Consultant.

