

# Family Infant Toddler (FIT) Program Providers and Practitioners

A Conversation with Cabinet  
Secretary Elizabeth Groginsky

June 10, 2020 11:00am – 12:00pm



NEW MEXICO

# Early Childhood Education & Care Department

# Early Childhood Education & Care Department (ECECD)

Senate Bill 22 – passed by the New Mexico Legislature and signed into law in March 2019 by Governor Michelle Lujan Grisham – created the ECECD. [Senate Bill 22](#)

The new department will administer, coordinate and align the following early childhood programs

- Pre-kindergarten and early pre-kindergarten

- Child care

- Home visiting

- Individuals with Disabilities Education Act – Part C – early intervention

- Head Start State Collaboration

- Food and Nutrition Programs



NEW MEXICO

**Early Childhood**  
Education & Care Department

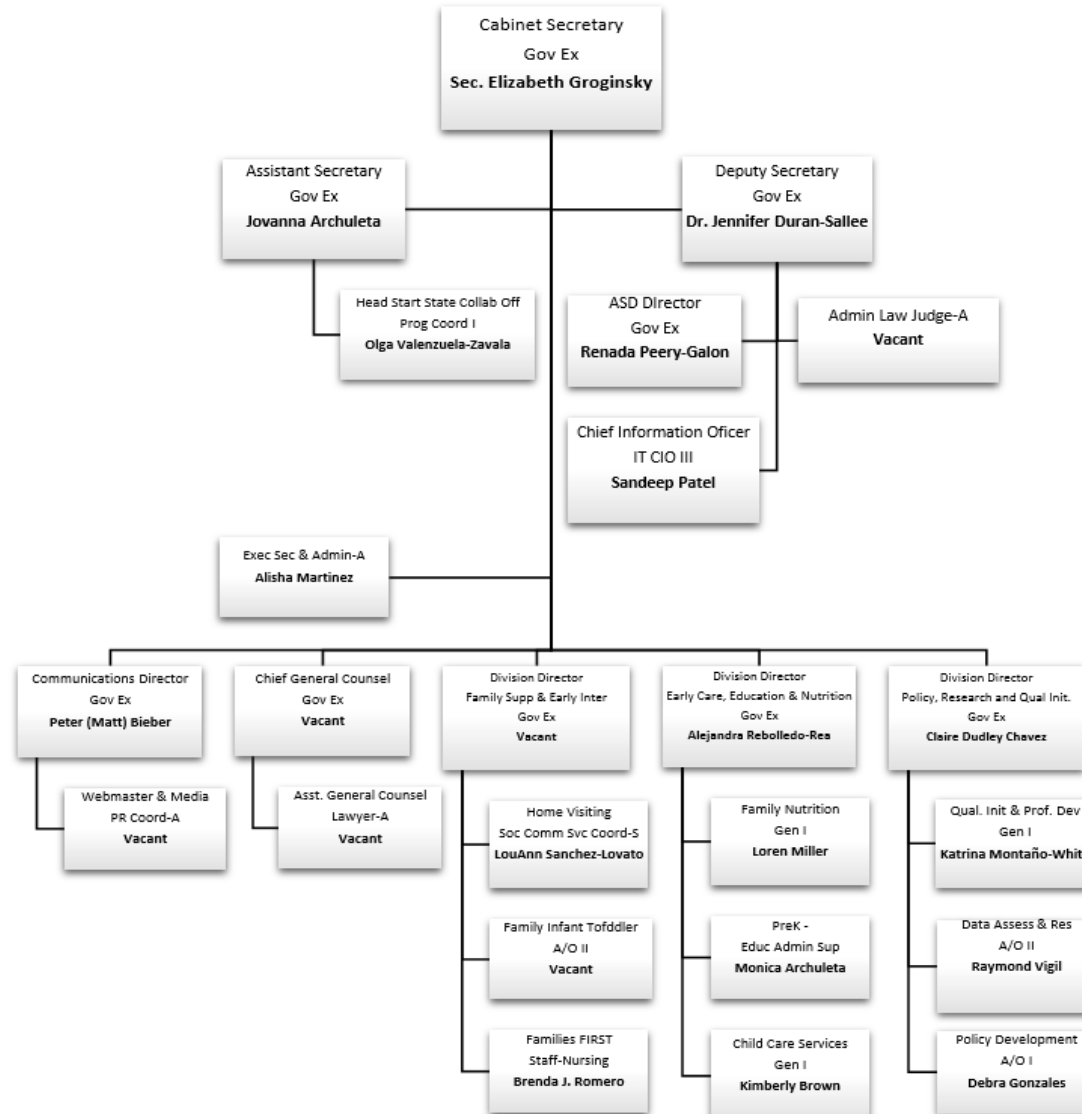
# Key Responsibilities of ECECD

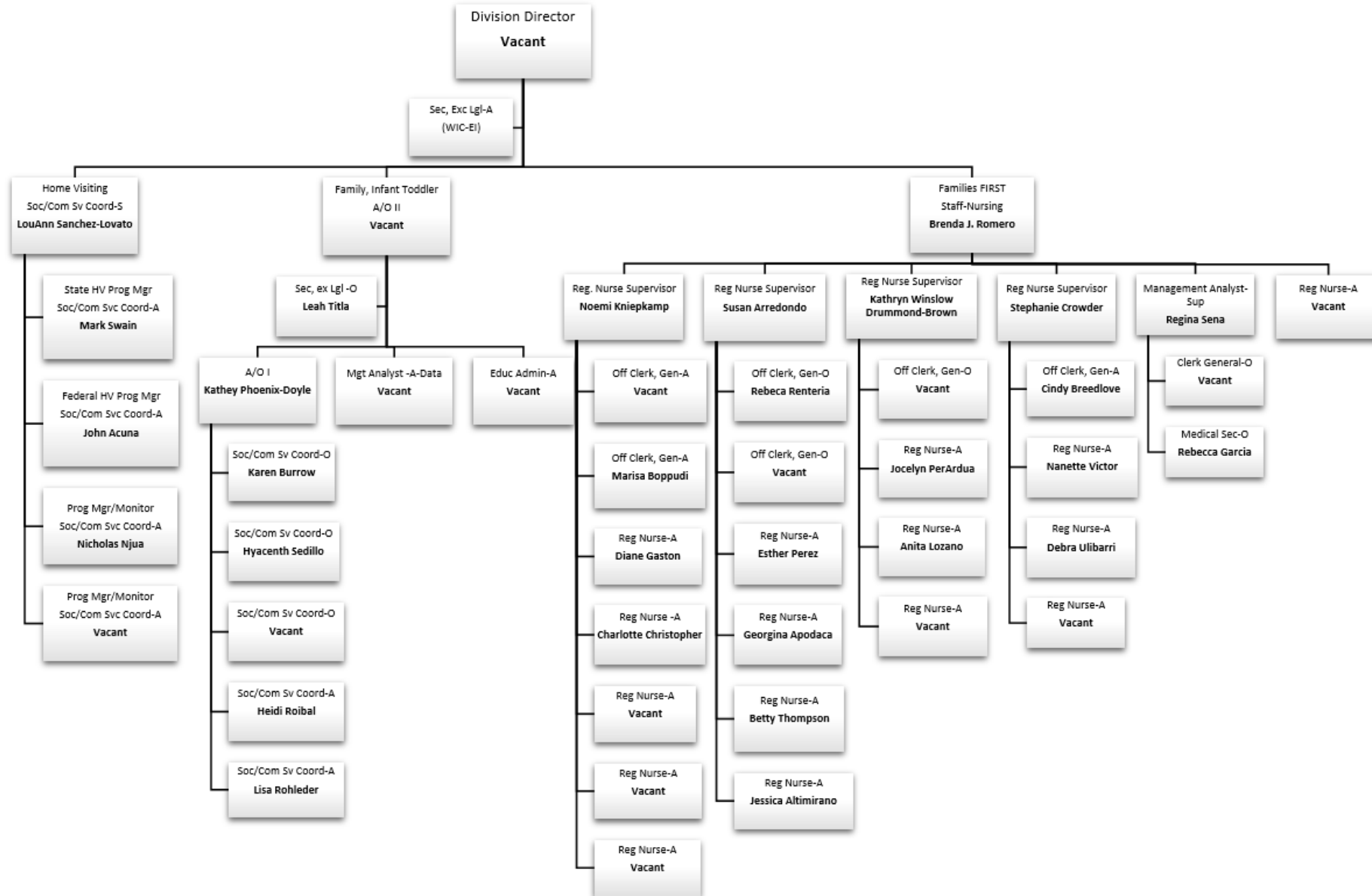


- Provide a system of seamless transition from prenatal to early childhood programs to Kindergarten;
- Provide consumer education and access to early childhood care and education programs;
- Advance quality early childhood education and care programs to support the development of children to prepare them for success in school;
- Ensure effective collaboration with state and local child welfare programs and early childhood health and behavioral health programs;
- Develop and manage effective data systems to support the necessary functions of a coordinated program;
- Develop an aligned system of workforce development for early childhood professionals; and
- Promote culturally and linguistically appropriate programming and provide equal education and care opportunities to non-English-speaking families

# Introduction Of The ECECD Leadership Team







# Transition from DOH - ECECD

MENU

Kathey Phoenix-Doyle

- Families
- Providers
- Referrals
- Publications
- Resources
- Locations
- Staff

Developmental Disabilities » Programs and Services » Family Infant Toddler Program

## Family Infant Toddler Program

The Family Infant Toddler (FIT) program provides a statewide system of early intervention in accordance with the Individuals with Disabilities Education Act (IDEA) Part C. The FIT Program provides early intervention services to over 14,000 children age birth to three who have or who are at risk for developmental delay, and their families.



Early intervention services are provided through a network of early intervention provider agencies across New Mexico. Please see the [FIT Providers List](#) for a current index of provider agencies. These agencies are funded through a combination of state and federal funds, including Medicaid, IDEA Part C grant, and private health insurance.

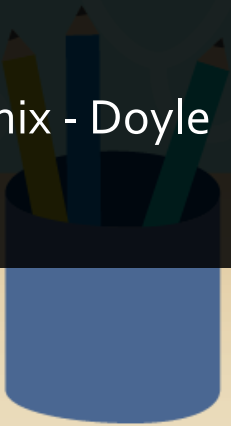
Please visit the following FIT Program pages for:

- [Families](#)
- [Providers](#)

# Re-Opening

Update

Kathey Phoenix - Doyle





# COVID – 19 Safe Practices

Personal  
Protective  
Equipment

CSP  
Subcommittee for  
Early Childhood

Testing

Child  
Immunization  
Campaign

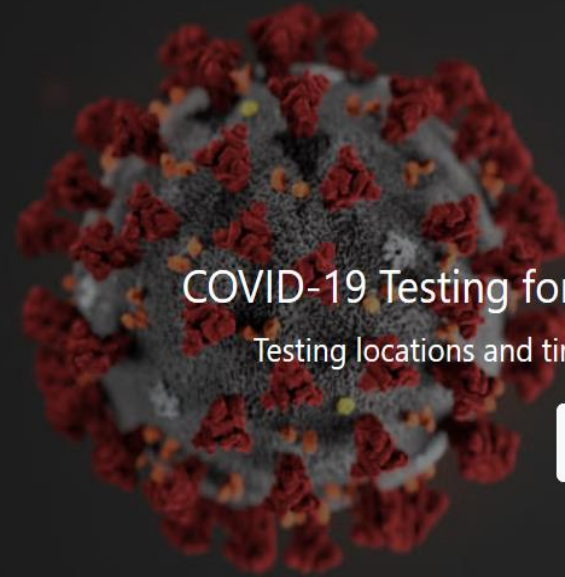
Questions?



Home

To go to our main site, click here.

Hide Slider



## COVID-19 Testing for Early Childhood Professionals

Testing locations and times for early childhood professionals.

[Learn More](#)

NM Health Hotline: 1-855-600-3453

NM Information Hotline: 1-833-551-0518

### Welcome!

You may have noticed that we have made some changes to the layout of our COVID response website. All of the previous information is still accessible and all previous links will continue to work, but please take a moment to explore the resources in the navigation menu above. If you have any questions about the site, please [contact a member of the web team](#).